

Rainfall Forecast 22-29 Oct 2025

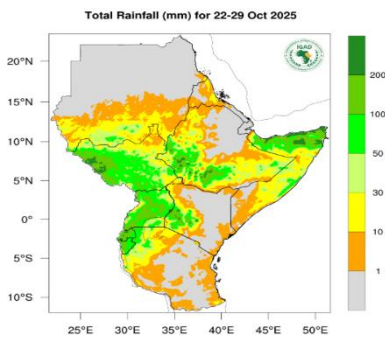


Figure 1 - Total rainfall forecast 22-29 Oct 2025 (Source: ICPAC).

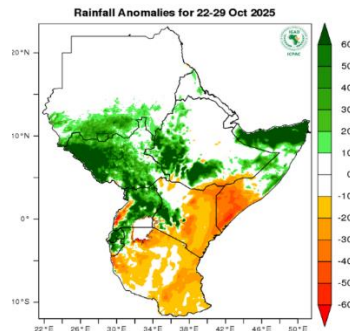


Figure 2 - Rainfall anomalies forecast 22-29 Oct 2025 (Source: ICPAC).

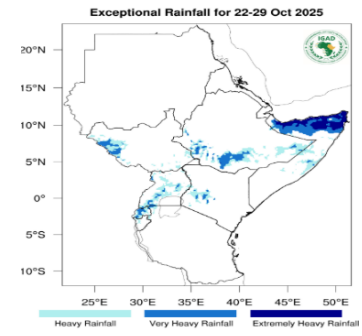


Figure 3 - Exceptional rainfall for 22-29 Oct 2025 (Source: ICPAC).

Figure 1 above indicates heavy rainfall (above 200mm-colored dark green) is expected over parts of western South Sudan, while moderate rainfall (50-200mm-colored light green) is expected in central and western South Sudan. Light rainfall (less than 50 mm-colored orange) is expected in eastern South Sudan. Figure 3 above indicates heavy rainfall (colored light blue) expected over the western part of Wau County.

In terms of rainfall anomalies (Figure 2), more than usual rainfall (colored green) is expected over most parts of South Sudan.

Temperature Forecast for 22-29 Oct 2025

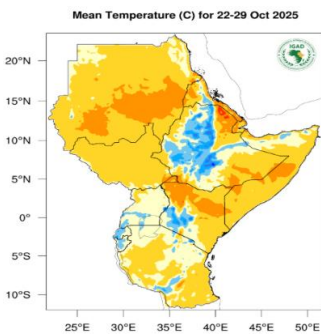


Figure 4 – Mean temperature forecast For 22-29 Oct 2025 (Source: ICPAC).

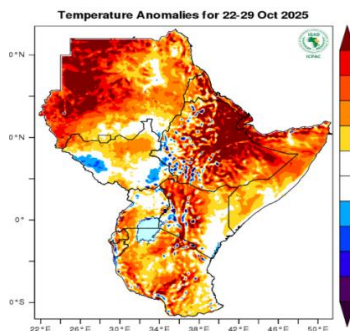


Figure 5 - Temperature Anomalies for 22-29 Oct 2025 (Source: ICPAC).

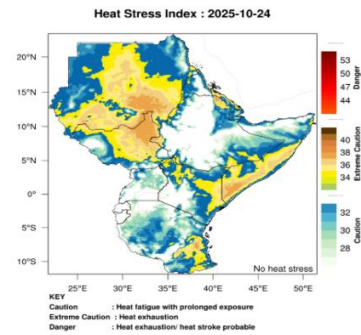


Figure 6 - Heat Stress Index: 2025-10-24 22-29 Oct 2025 (Source: ICPAC).

Figure 4 above indicates moderate temperatures (20 - 32 °C-colored orange) expected over South Sudan. Figure 6 above indicates, elevated levels of heat stress expected in the northern regions of South Sudan.

According to temperature anomalies (Figure 5), warmer than usual temperatures (colored orange) are expected over most parts of South Sudan, while cooler than usual temperatures (colored blue) are expected over a few regions in western and south-eastern South Sudan.

Source: ¹ <https://www.icpac.net/weekly-forecast/>

This weather bulletin is derived from ICPAC weekly updates and funded by FAO South Sudan's projects, including the Program to Build Resilience for Food and Nutrition Security in the Horn of Africa (funded by the African Development Bank), the Emergency Locust Response Program and Resilient Agricultural Livelihoods Project (funded by the World Bank), and funding from the Norwegian and Swiss governments.

Visit the CLIMIS Portal: <http://www.climis-southsudan.org>

View Rain Gauge Data on the CLIMIS Portal: http://www.climis-southsudan.org/agromet/rainfall_data

For more details, contact FAO South Sudan: FAO-South-Sudan@fao.org